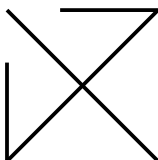
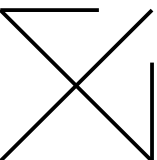


B/2



www.lizhaywood.com.au

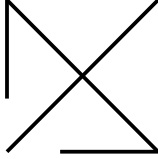
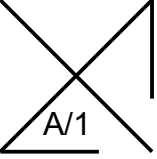
Cut 4 fabric
Cut 4 interfacing

1cm seam allowances

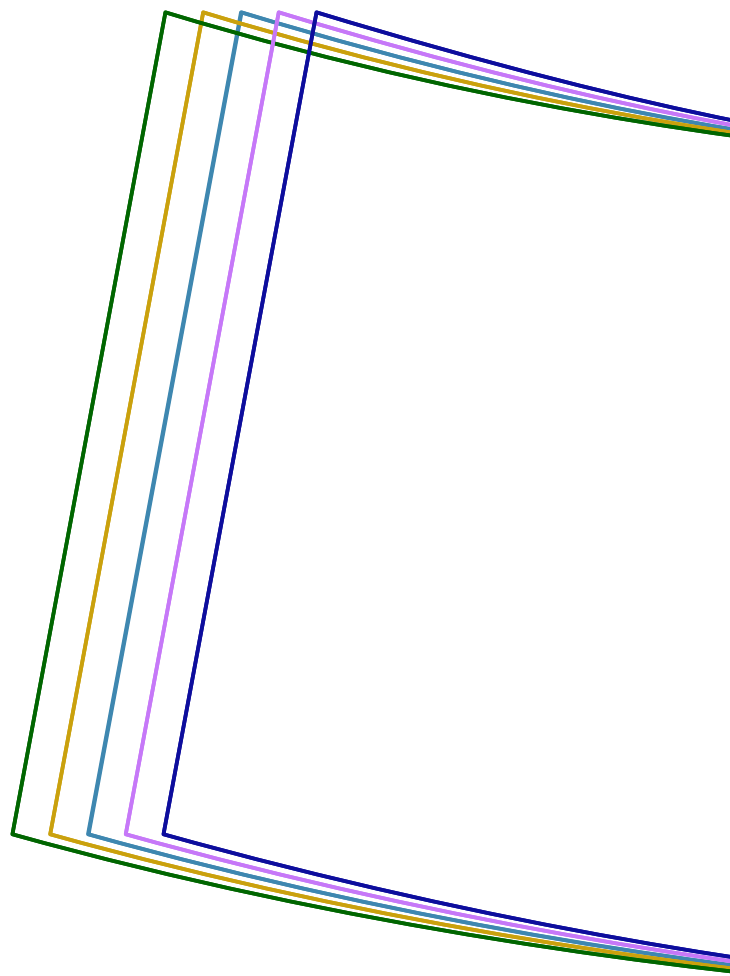
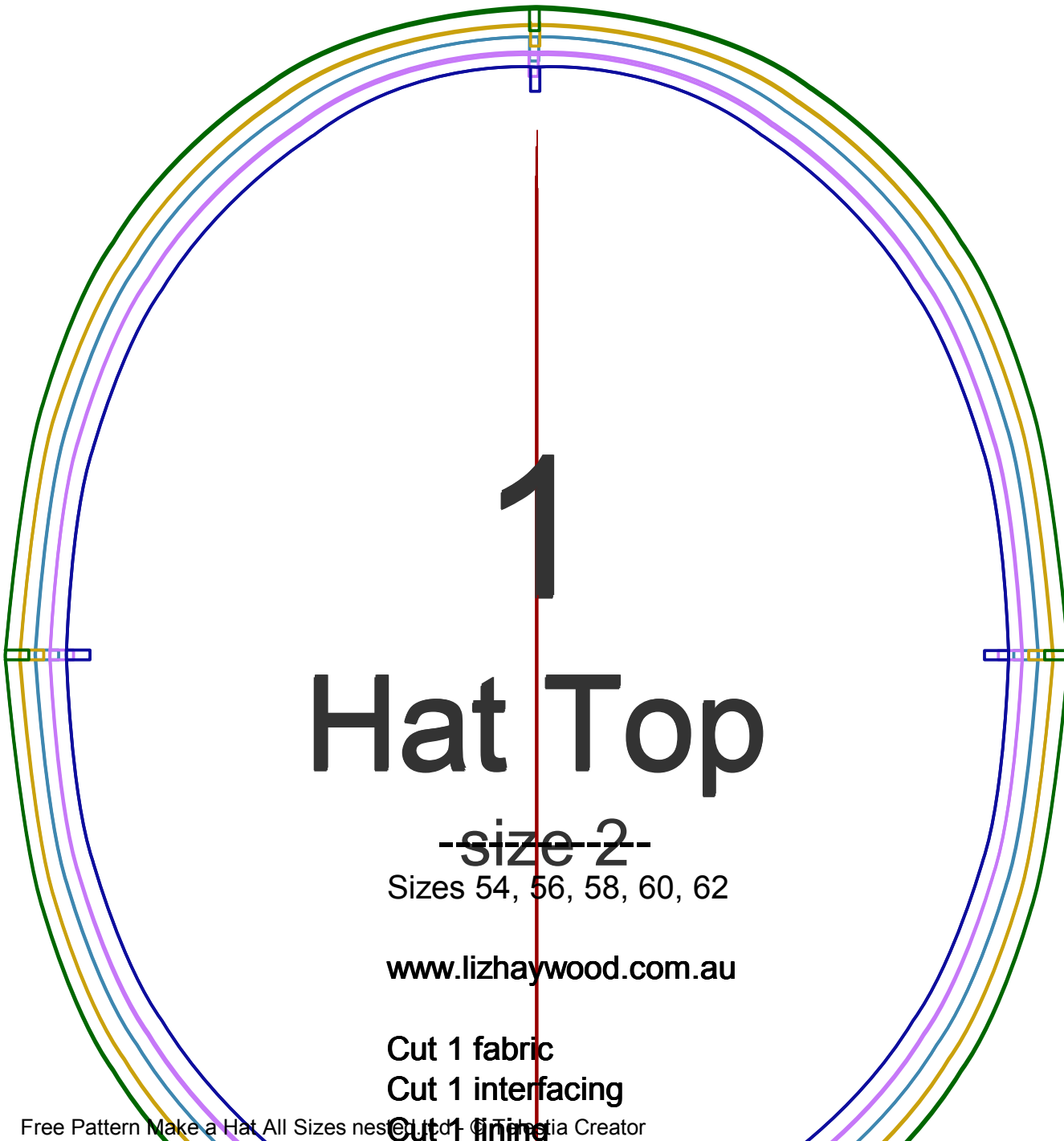
3

Hat Brim

sizes 54, 56, 58, 60, 62cm



A/1



1

Hat Top

~~size 2~~

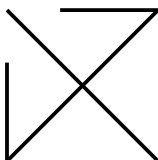
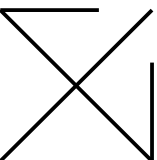
Sizes 54, 56, 58, 60, 62

www.lizhaywood.com.au

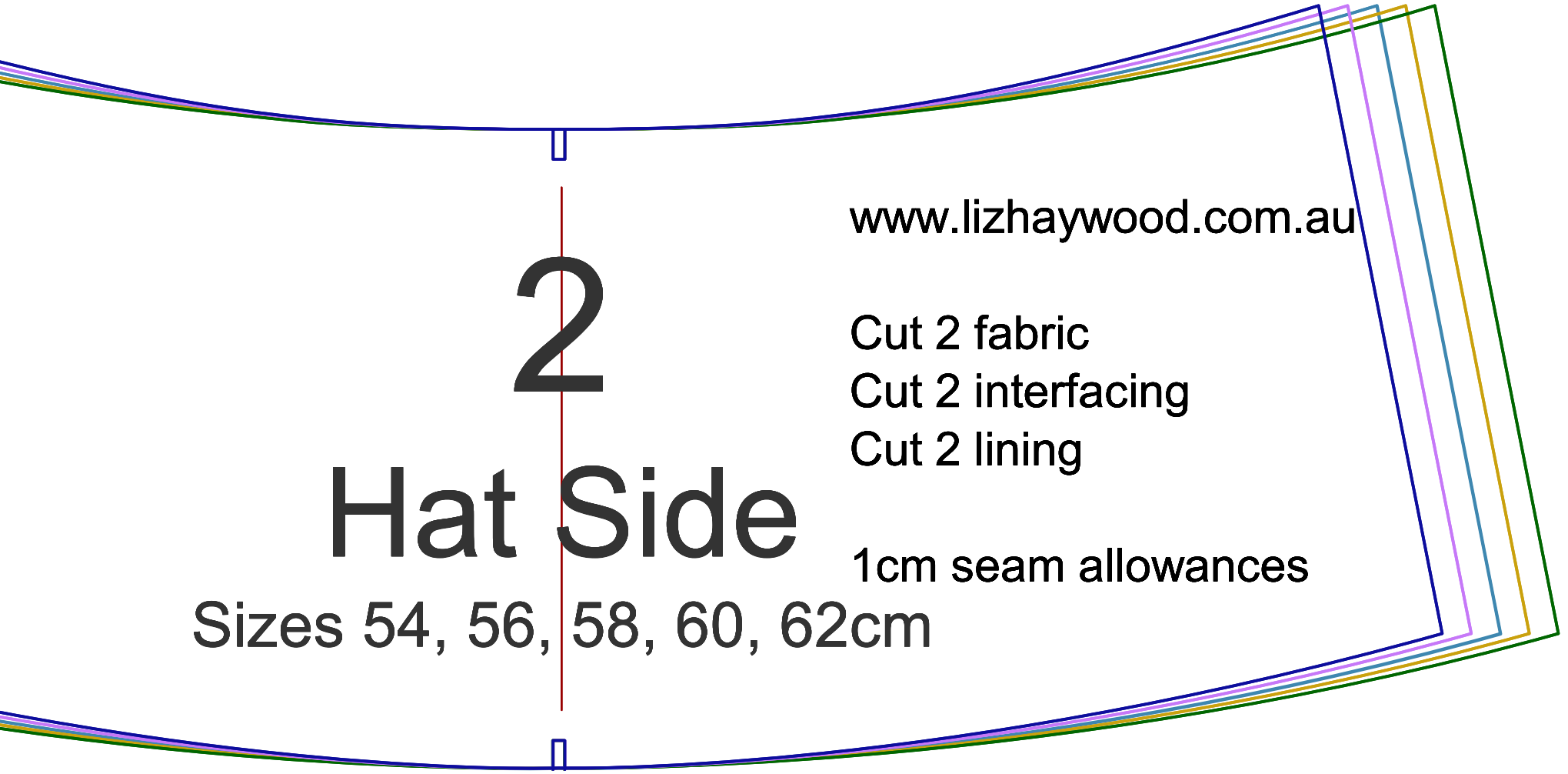
Cut 1 fabric

Cut 1 interfacing

Cut 1 lining



B/1



www.lizhaywood.com.au

Cut 2 fabric

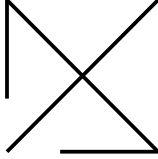
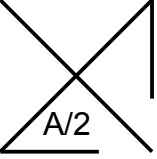
Cut 2 interfacing

Cut 2 lining

1cm seam allowances

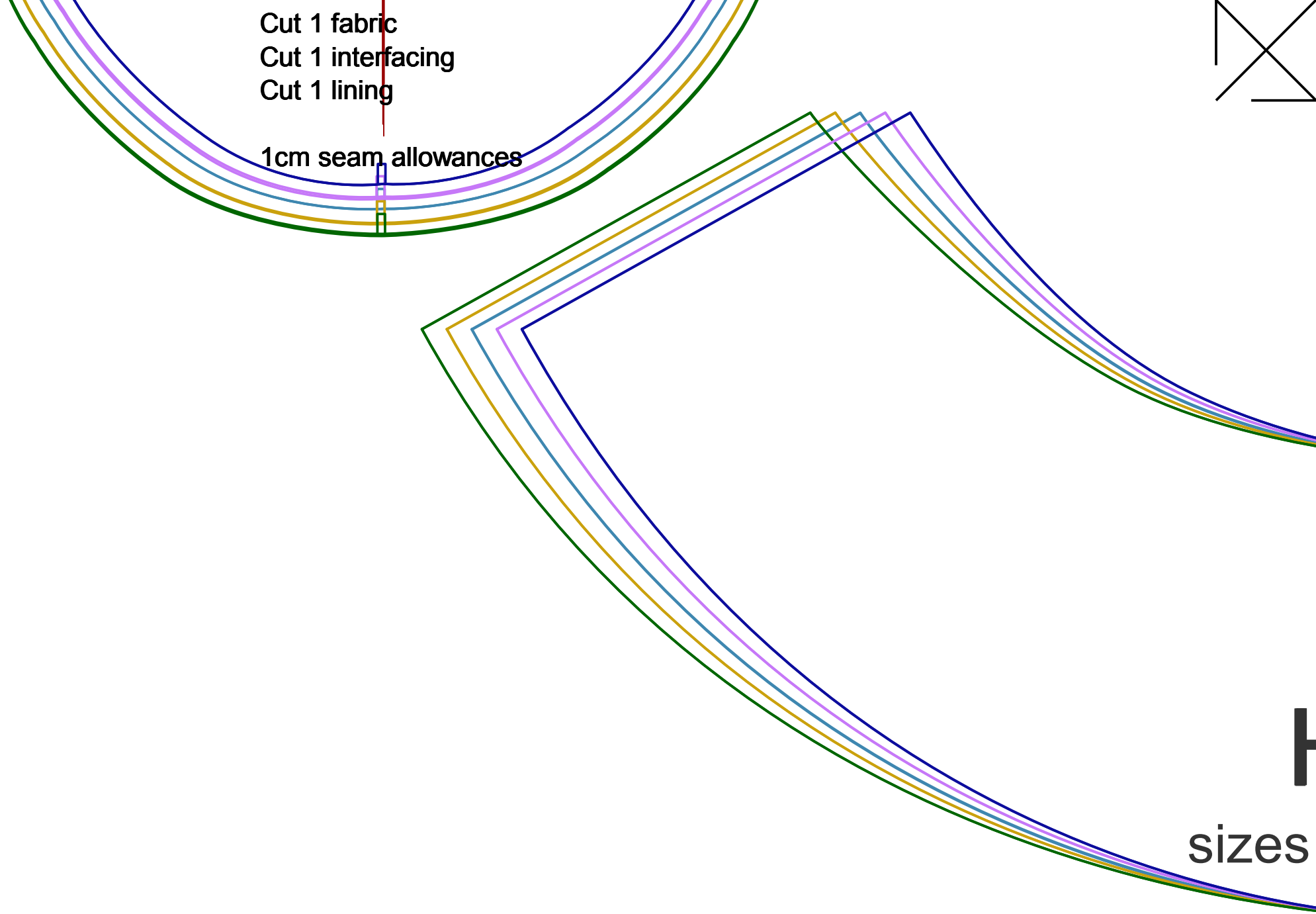
Hat Side

Sizes 54, 56, 58, 60, 62cm



Cut 1 fabric
 Cut 1 interfacing
 Cut 1 lining

1cm seam allowances



A/2

H
 sizes

